



INDOFINE Chemical Company, Inc.

121 Stryker Lane, Bldg. 30, Suite 1 • Hillsborough, NJ 08844 • U.S.A.

Phone: (908) 359-6778 • FAX: (908) 359-1179

website: www.indofinechemical.com

e-mail: chemical@indofinechemical.com

CERTIFICATE OF ANALYSIS

Catalog Number: 021264

Product Name: 2,4-DIMETHOXY-2'-HYDROXYCHALCONE

Lot Number: 98138

Chemical Formula: C₁₇H₁₆O₄

Molecular Weight: 284.32

Melting Point: 102-104°C

Appearance: Yellow powder

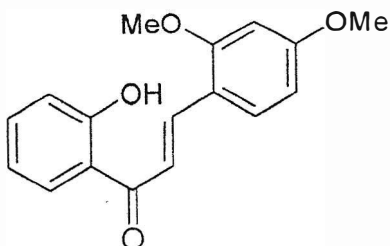
Solubility: Soluble in Chloroform

TLC: Hexane : Ethyl acetate (7:3)

NMR Spectrum: Enclosed (Confirms to the structure)

Storage: Cool dry place

Purity (HPLC): 98.51%





INDOFINE Chemical Company, Inc.

121 Stryker Lane, Bldg. 30, Suite 1 • Hillsborough, NJ 08844 • U.S.A.

Phone: (908) 359-6778 • FAX: (908) 359-1179

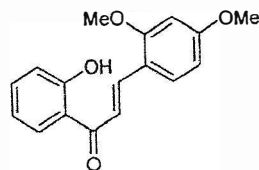
website: www.indofinechemical.com

e-mail: chemical@indofinechemical.com

HPLC ANALYSIS

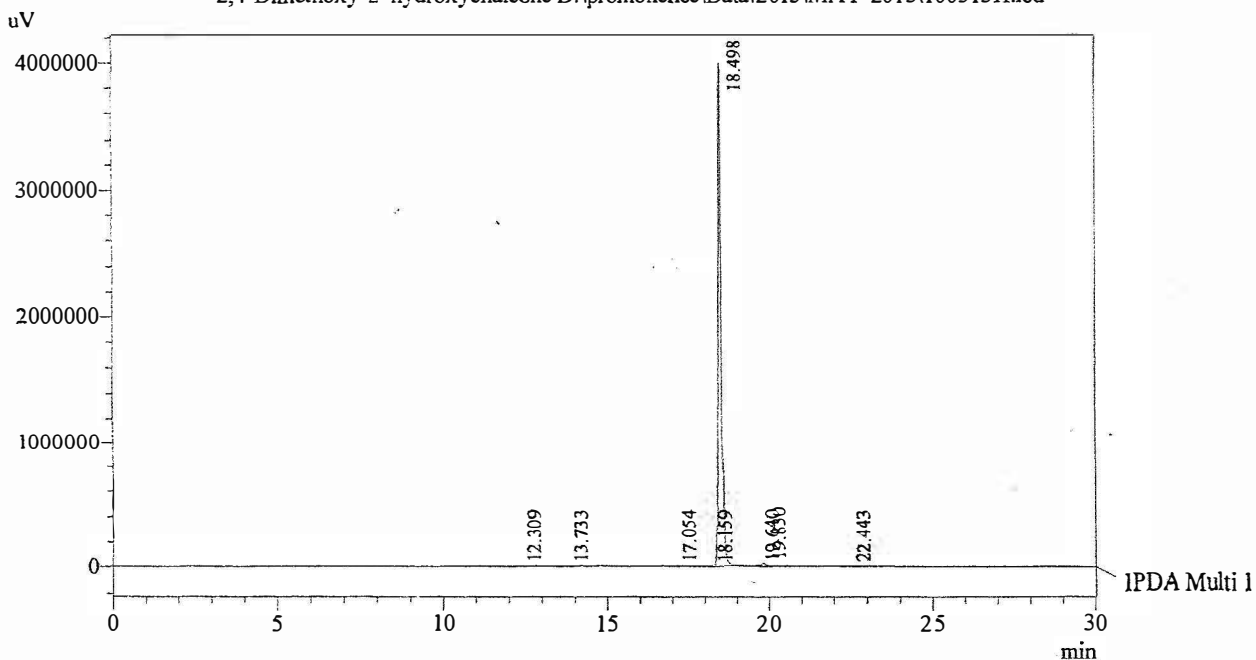
Acquired by : Sanjeev
 Sample Name : 2,4-Dimethoxy-2'-hydroxychalcone
 Sample ID : Lot No:- 98138
 Injection Volume : 20 uL
 Data Filename : 100513H.lcd
 Method Filename : Linear Gradient.M.lcm

Catalog No.: 021264
 Product name: 2,4-Dimethoxy-2'-hydroxychalcone
 Lot No.: 98138



Column : LUNA C-18(2), (250mm x4.6 mm 5.0µ)
 Flow : 1.000 mL/min.
 Mobile Phase : A(Water) B(Acetonitrile)
 0.01 90 10
 12.0 10 90
 20.0 10 90
 23.0 90 10
 30.0 90 10
 Diluent : Acetonitrile

Chromatogram
 2,4-Dimethoxy-2'-hydroxychalcone D:\promonence\Data\2013\MAY-2013\100513H.lcd



1 IPDA Multi 1 / 254nm 4nm

Peak Table

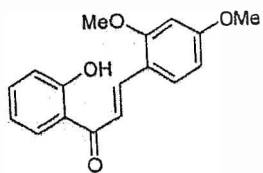
PDA Ch1 254nm 4nm

Peak#	Name	Ret. Time	Area	Area %	Relative Retention Time
1	RT:12.309	12.309	13133	0.05	0.67
2	RT:13.733	13.733	12764	0.05	0.74
3	RT:17.054	17.054	16007	0.06	0.92
4	RT:18.159	18.159	14236	0.06	0.98
5	2,4-Di-OMe-2'-OH-chalcone	18.498	24494094	98.51	1.00
6	RT:19.640	19.640	51102	0.21	1.06
7	RT:19.830	19.830	200028	0.80	1.07
8	RT:22.443	22.443	64159	0.26	1.21
Total			24865522	100.00	



INDOFINE Chemical Company, Inc.
121 STRYKER LANE
BLDG. 30, SUITE 1
HILLSBOROUGH, NJ 08844

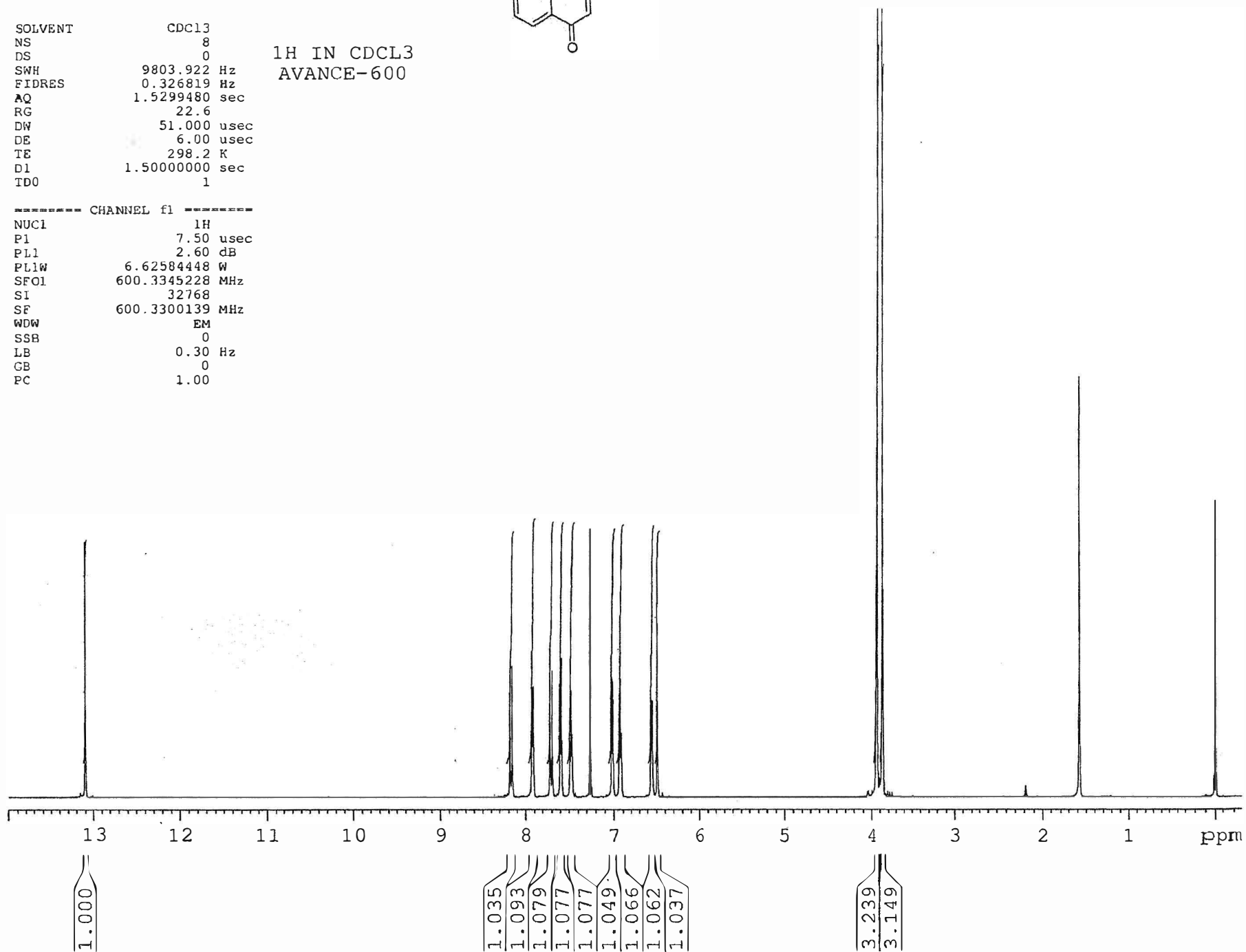
Catalog No.: 021264
Product name: 2,4-Dimethoxy-2'-hydroxychalcone
Lot No.: 98138



SOLVENT CDC13
NS 8
DS 0
SWH 9803.922 Hz
FIDRES 0.326819 Hz
AQ 1.5299480 sec
RG 22.6
DW 51.000 usec
DE 6.00 usec
TE 298.2 K
D1 1.50000000 sec
TD0 1

1H IN CDCL3
AVANCE-600

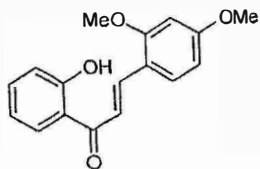
----- CHANNEL f1 -----
NUC1 1H
P1 7.50 usec
PL1 2.60 dB
PL1W 6.62584448 W
SF01 600.3345228 MHz
SI 32768
SF 600.3300139 MHz
WDW EM
SSB 0
LB 0.30 Hz
GB 0
PC 1.00





INDOFINE Chemical Company, Inc.
121 STRYKER LANE
BLDG. 30, SUITE 1
HILLSBOROUGH, NJ 08844

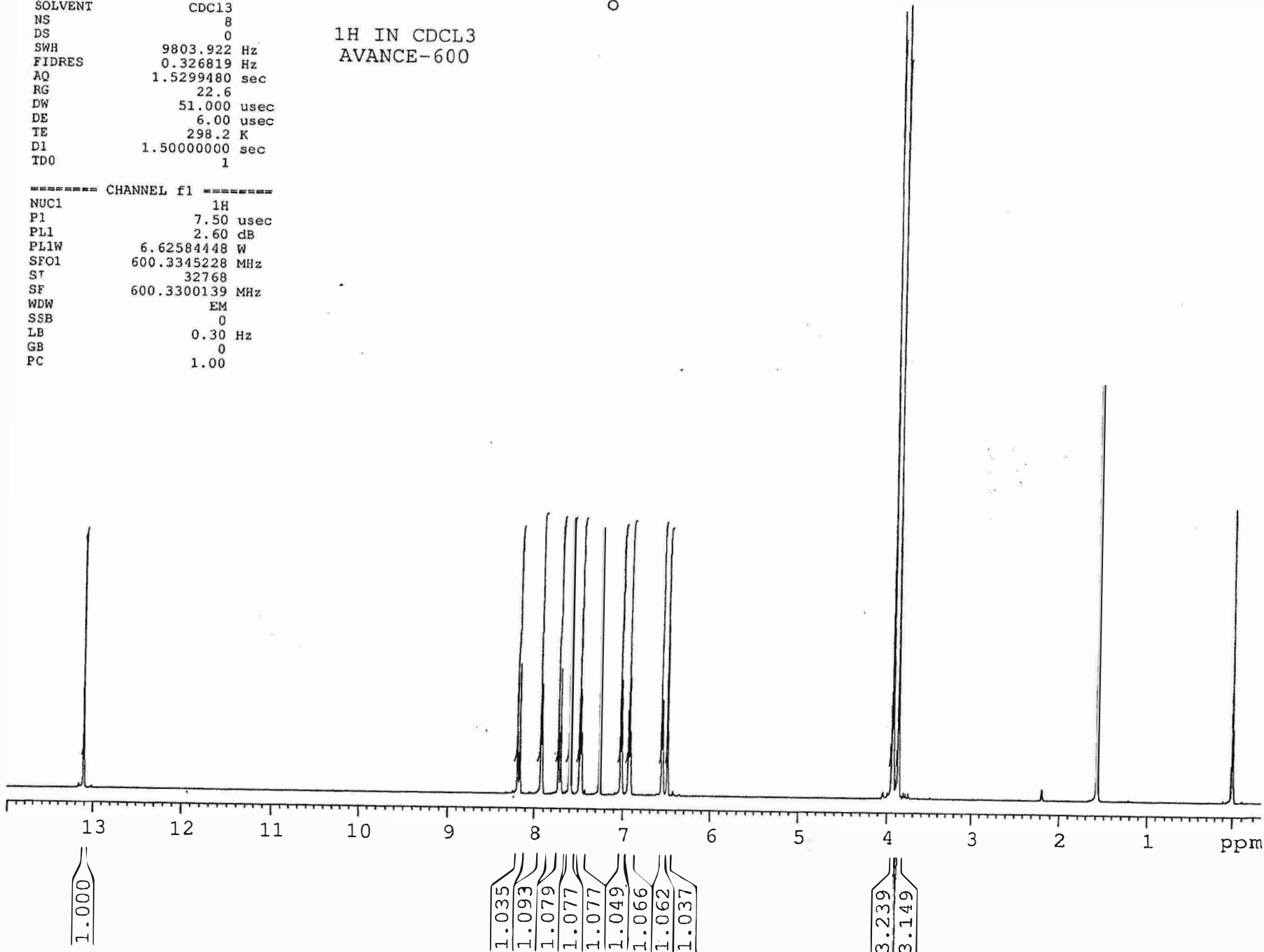
Catalog No.: 021264
Product name: 2,4-Dimethoxy-2'-hydroxychalcone
Lot No.: 98138



1H IN CDCL3
AVANCE-600

SOLVENT CDC13
NS 8
DS 0
SWH 9803.922 Hz
FIDRES 0.326819 Hz
AQ 1.5299480 sec
RG 22.6
DW 51.000 usec
DE 6.00 usec
TE 298.2 K
D1 1.50000000 sec
TD0 1

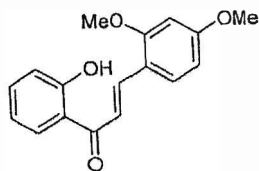
===== CHANNEL f1 =====
NUC1 1H
P1 7.50 usec
PL1 2.60 dB
PL1W 6.62584448 W
SFO1 600.3345228 MHz
ST 32768
SF 600.3300139 MHz
WDW EM
SSB 0
LB 0.30 Hz
GB 0
PC 1.00





INDOFINE Chemical Company, Inc.
 121 STRYKER LANE
 BLDG. 30, SUITE 1
 HILLSBOROUGH, NJ 08844

Catalog No.: 021264
 Product name: 2,4-Dimethoxy-2'-hydroxychalcone
 Lot No.: 98138



SOLVENT CDC13
 NS 8
 DS 0
 SWH 9803.922 Hz
 FIDRES 0.326819 Hz
 AQ 1.5299480 sec
 RG 22.6
 DW 51.000 usec
 DE 6.00 usec
 TE 298.2 K
 D1 1.5000000 sec
 TDO 1

¹H IN CDCL3
 AVANCE-600

==== CHANNEL f1 =====
 NUC1 1H
 P1 7.50 usec
 PL1 2.60 dB
 PL1W 6.62584448 W
 SFO1 600.3345228 MHz
 SI 32768
 SF 600.3300139 MHz
 WDW EM
 SSB 0
 LB 0.30 Hz
 GB 0
 PC 1.00

